

# JPMorgan Personal Asset Manager



Investing in your Valassis Employees' Retirement Saving Plan account is important.

## Are you sure you've made good investment decisions?

Take advantage of your plan with professional management.

### Your retirement account needs attention

You work hard for the money you contribute to your retirement plan. That money should work hard for you.

To take advantage of your retirement plan, decisions need to be made. Your retirement account isn't like a bank account. There are a number of mutual funds available in the plan, with different investment objectives and track records.

If you have an appropriate mix of funds, your savings could grow substantially. If you have an inappropriate mix, you could lose money. Do you know if your investment strategy is on track?

### Investment professionals working for you

With the **JPMorgan Personal Asset Manager** program, powered by Financial Engines, a team of professionals selects a personalized mix of funds designed to be appropriate for you, out of the funds available in your retirement plan. You see the initial proposed mix before any changes are made to your account.

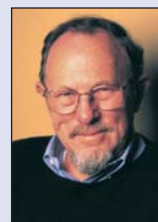
You get peace of mind knowing that professionals are managing your investments, and we're here to help you whenever you have questions. To speak with an Investment Advisor Representative, call us toll-free at 800-345-2345.

### Experienced advisors

JPMorgan and its affiliates bring a history of leadership in global financial services and investment management going back nearly two centuries. JPMorgan Retirement Plan Services serves about 300 employers like yours with nearly 1 million retirement plan participants.

JPMorgan Institutional Investments (JPMII) has hired Financial Engines to provide your Personal Evaluation and the JPMorgan Personal Asset Manager program. All advisory services are provided by JPMII, a federally registered investment adviser. Neither JPMorgan nor Financial Engines guarantees future results.

### Objective advice



Nobel Prize-winning economist Bill Sharpe founded Financial Engines in 1996 after spending decades helping some of the largest pension funds in the United States. Financial Engines is an

independent, registered investment adviser that does not sell investments or receive commissions for funds it recommends.

You can be confident that JPMorgan and Financial Engines will provide advice tailored to help you meet your long-term financial goals.

– Turn the page to see how the program works –



powered by

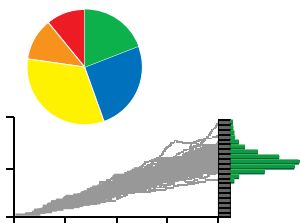


## How JPMorgan Personal Asset Manager works

The program uses sophisticated financial models and the latest research to create your investment strategy, based on a proven process used for decades by some of the country's largest investment managers. You'll receive clear, objective, personalized advice and get peace of mind knowing that professionals are monitoring your retirement investments.

### 1. We research your options and create a custom plan for you

Our financial research team has carefully researched the options available in your retirement plan and analyzed the funds in your plan to create a customized investment strategy based on your retirement horizon and financial profile.



### 2. You review your new strategy

You receive a welcome kit with a printed Personal Plan Preview, which explains your new personalized investment strategy. If you're happy with the strategy, do nothing. But if you want to tell us more about your preferences or add information on other investment accounts, you can do so by calling an Investment Advisor Representative at 800-345-2345.



### 3. We handle the transactions and monitor your account

Soon after your welcome kit is mailed, we begin making any necessary transfers and investment elections. We'll also start monitoring your portfolio on an ongoing basis. Over time, if adjustments are needed to keep your portfolio properly diversified and on track, we'll make them.



Investment Advisor Representatives can further personalize your advice and answer questions.

### 4. We keep you informed

Each quarter, you'll receive a printed Progress Report showing your account balance, an estimate of the value of your account when you retire, and the investment allocations that reflect your situation and market conditions. To discuss your account with an Investment Advisor Representative, call 800-345-2345 business days, 7 a.m. to 7 p.m. central time.



### Affordable and easy

With JPMorgan Personal Asset Manager, it doesn't take a lot of time or money to get the benefit of professional financial management.

The maximum fee is 0.60% of your account balance per year. For example, if you have \$10,000 in your account, you receive professional management for about \$4.93 a month.\*

The fee is deducted directly from your account, so there's no bill to pay.

### Cancel anytime

You can cancel at any time if you aren't satisfied. Just call 800-345-2345 to speak to an Investment Advisor Representative.

\*Discounts available for accounts over \$100,000. Please call 800-345-2345 for details. The example monthly fee is the sum for a 30-day month. The fee is adjusted accordingly for a shorter or longer month.

J.P. Morgan Institutional Investments Inc. ("JPMII") has hired Financial Engines to provide sub-advisory services. JPMII is a federally registered investment advisor. Financial Engines Advisors LLC, a federally registered investment advisor and wholly owned subsidiary of Financial Engines Inc., is an independent company that is not affiliated with J.P. Morgan Retirement Plan Services LLC or JPMII. Neither JPMII nor Financial Engines guarantees future results. Financial Engines is a registered trademark of Financial Engines, Inc. All other marks are the exclusive property of their respective owners. © 2005-2006 Financial Engines, Inc. All rights reserved. Used with permission. J.P. Morgan Retirement Plan Services LLC provides plan recordkeeping and administrative services.